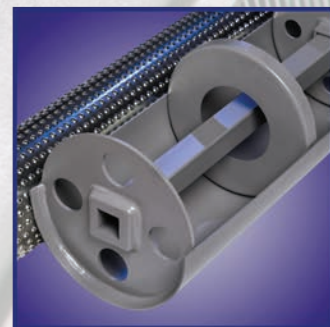
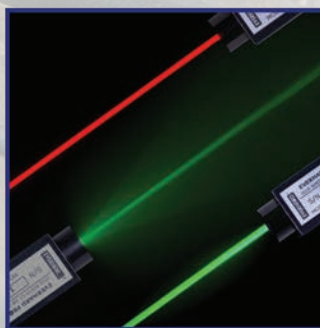


TOOLS AND EQUIPMENT FOR THE TIRE AND RUBBER INDUSTRY

HAND KNIVES - MACHINE KNIVES - SHEARS - ROLLERS/STITCHERS - TOOL HEATERS -
LINE PROJECTORS - CALENDER SHELLS/SERVICE CORES - MATERIAL HANDLING PRODUCTS



EVERHARD®

QMS REGISTERED TO ISO 9001

EVERHARD PRODUCTS, INC.

1016 Ninth Street SW ■ Canton, Ohio 44707 USA

Toll-free: 1-800-298-2832 or 330-453-7786

Toll-free Fax: 1-800-225-0984 or 330-453-7449

Tire.Everhard.com

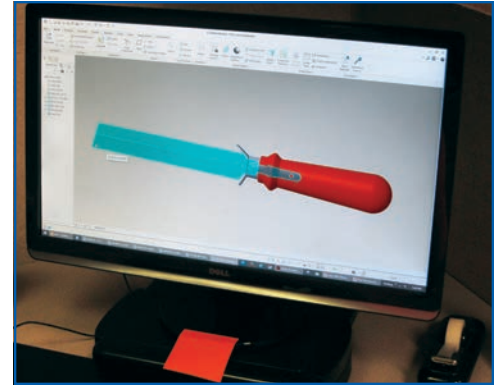
HAND KNIVES

ENGINEERING, MANUFACTURING, AND GRINDING CAPABILITIES, WITH ERGONOMIC FEATURES

Everhard manufactures many styles of hand knives used in tire and rubber working industries -- hook knives, V-trim knives, flash trim knives, square point knives, and mill blades.

Manufacturing, Grinding, Engineering: Everhard's advanced capability in knife grinding is well established, allowing us to produce hand knives designed for our customers' specific applications.

Ergonomics Options: Also important, Everhard has developed plastic and ergonomic, cushion- grip handle options, which reduce contamination inside the plant, and provide a more comfortable and secure grip.

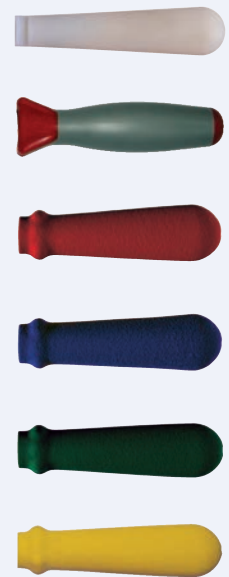


Knife development and engineering using 3D software.

HOOK KNIVES



HANDLE OPTIONS



SQUARE POINT KNIVES



V-TRIM KNIVES



FLASH TRIM KNIVES



MACHINE KNIVES / SHEARS

MACHINE KNIVES

Everhard manufactures and supplies many styles of machine knives used in tire and rubber working industries.

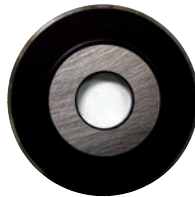
- Bias cutters
- Calender blades
- Mill knives
- Pin vent trimmers
- Slitter wheels

As with our hand knives, our grinding capability is unmatched, allowing us to produce custom-designed machine knives for specific applications.

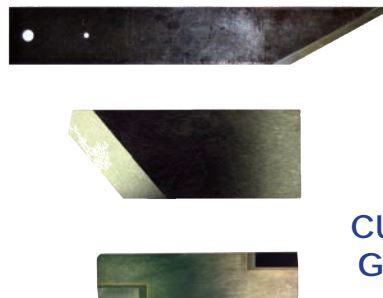


PIN VENT TRIMMERS

SLITTER KNIVES



CUSTOM MACHINE KNIVES



CUSTOM GRINDS

CALENDER BLADES



BIAS CUTTERS



INDUSTRIAL SHEARS AND TRIMMERS

Everhard supplies industrial hand shears and scissors. Some models are forged steel, with chrome over nickel plating. Other models are lightweight stamped stainless steel. Shears are available with knife edges, serrated edges, curved blades, blunted tips, fully rounded tips, and ergonomic handles.

INDUSTRIAL FORGED STEEL BENT AND STRAIGHT TRIMMERS



LIGHT DUTY STAINLESS STEEL TRIMMERS



HEAVY DUTY AND SPECIALTY SHEARS



ERGONOMIC MODELS



ROLLERS AND STITCHERS

QUALITY AND VERSATILITY

Everhard designs and manufactures hand rollers and hand stitchers for the tire and rubber working industries. Everhard's engineering staff can assist in designing custom tools to fit a customer's specific application. Rollers and stitchers include:

- Beveled
- Concave
- Corrugated
- Porcupine
- Natural Rubber / Urethane / Silicone
- Smooth Bevel
- Smooth Flat
- Concave
- Concave Bevel
- Corrugated
- Corrugated Bevel
- Gooseneck Stitchers
- Rounded Edge (Convex)
- Butt Splicers
- Rotary Trim Knives

Rollers and stitchers are available in multiple sizes and different materials, such as steel, aluminum, stainless steel, rubber, silicone, urethane, and nylon. Also available are non-stick coatings, such as PTFE, and metal coatings like nickel plate and zinc.

Fork options include single, double, curved (ergonomic), and heavy duty. Heavy duty bearings are also available.



MR05029
Silicone
Roller



MR01091
Smooth
Stitcher



MR10883
Gooseneck
Stitcher



MR05555
Porcupine
Roller w/Guard



MR06502
Porcupine
Roller



MR02001
Smooth
Roller



MR02024
Smooth
Roller



MR02047
Smooth
Roller



MR01071
Smooth
Stitcher



MR02919
Corrugated
Roller

ELIMINATING CONTAMINATION IN YOUR PLANT: PLASTIC AND SOFT-GRIP HANDLE OPTIONS

Everhard has developed plastic and ergonomic handle options for its hand tools. Not only does their use help reduce contamination inside tire and rubber plants, but the ergonomic handles offer a more comfortable grip -- especially important for those tools used for repetitive tasks. These rollers include: ergonomic (or offset) forks, with a soft-grip plastic handle (shown at right).

Other options for rollers are: 10" wood or plastic handle, 10" handle with cushion-grip, heavy-duty forks, and guard.



EVERHARD ROLLER
W/STANDARD 5"
WOOD HANDLE

ADDITIONAL
ERGONOMIC HANDLE
OPTIONS ARE
AVAILABLE!

EVERHARD ROLLER
W/SOFT-GRIP
PLASTIC HANDLE
W/OFFSET FORKS

TOOL HEATERS

HEATERS BUILT FOR MULTIPLE APPLICATIONS, AVAILABLE WITH CUSTOM CALIBRATION

In the tire and rubber working industries, knives and other tools are sometimes heated to improve their ability to cut rubber material. Everhard's knife and tool heaters are developed and manufactured in a number of different capacities and temperature ranges so the right heater is used in the right application, and satisfies any plant safety guidelines.

Our electric heaters are UL-listed and used for heating rubber cutting knives, trim knives, and even shears to required temperatures. Heaters also come equipped with a single-layer perforated guard to protect the operator from the unit's heated surface. Most models are available with or without thermostats.



FEATURES

- UL-Listed: Safety tested and certified by Underwriters Laboratories, Inc.
- Maintains constant temperature
- Superior to cord-connected heating tools that can restrict workspace, using separate tools with self-contained heaters provides greater flexibility.
- Heating unit is accessible from both the front and back to allow multiple tool heating.
- For variable temperature control, heaters are available with thermostats.
- Closed back is available to shield heating unit from drafts or fans.
- Spring steel hold-down clip is available to keep knife in position and in direct contact with heating element.
- Heaters can be manufactured to customer's required temperature (minimum order required).

PRECISE-TEMPERATURE HEATERS

Everhard's Precise-temperature Heater uses a precision thermostat for accurate temperature control. A thermostat control screw, located behind a tamper-proof cover plate, is accessible only by using a special tool bit (included) to remove the cover plate. Operating temperature is monitored with a digital Type K thermometer (not included).

FEATURES

- UL-Listed: Safety tested and certified by Underwriters Laboratories, Inc.
- Heater compartment features a closed back to decrease temperature variation.
- Spring steel hold-down clip comes standard to keep knife in position and in direct contact with the heating element.



LINE PROJECTORS

LASER LINE PROJECTORS

Everhard's laser line projectors have a fixed focus laser line -- no focus adjustment is necessary, or tools required. Depth of focus is between 3 and 12 feet, and the projection remains the same size regardless of the projector's distance to the target as long as the projector is positioned within that range. Laser projectors fit into a variety of mounting brackets and positioners to add flexibility to laser alignment systems. The projector's power supply plugs into a 120VAC outlet.

FEATURES

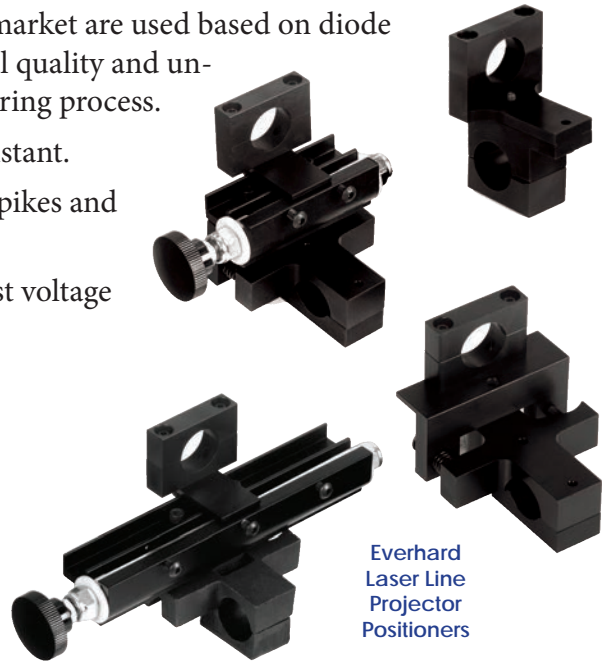
- **Eye-Safe:** All of Everhard's laser diode assemblies have a Class II rating, approved by the FDA through the CDRH -- output power is less than or equal to 1 mW, and considered eye-safe -- no eye protection is required.
- **Laser Diode Module:** Only the highest quality diodes on the market are used based on diode life and consistency of manufacture. Laser diodes are industrial quality and undergo rigorous quality control measures during the manufacturing process.
- **Sapphire Lens Cap:** Keeps out dust and dirt and is scratch resistant.
- **Voltage Regulator:** Protects the laser module from electrical spikes and transients.
- **Integrated Circuit Board:** Serves as an extra protection against voltage variances.



Everhard
Laser Line
Projector

MODELS AVAILABLE

- **ML09550 Red Line:** Projects a 1 mm wide line
- **ML09750 Green Line:** Projects a 1 mm wide line
- **ML09730 Green Line:** Projects a 2mm wide line.
- **ML09760 Green Crosshair:** Projects a 1.5 mm wide crosshair
- Positioners and power supplies are sold separately.



Everhard
Laser Line
Projector
Positioners

INCANDESCENT LINE PROJECTORS

Everhard's incandescent line projector forms a thin, uniform line of white light, 0.062" wide. Focus and line adjustments are done by hand. No tools are needed. Anti-vibration compression screws and the solid mounting bracket allow highly reliable line adjustments. Inspected and tested to ensure a sharp, bright line. Projector lamps are 10 volt, 3.5 amp, with a standard flange fitting most single-line projectors. Projector lamps are sold separately from the projectors, and replacement lamps are available.



ML09010
Incandescent
Line Projector



ML09020
Incandescent
Projector Bulb

MATERIAL HANDLING PRODUCTS

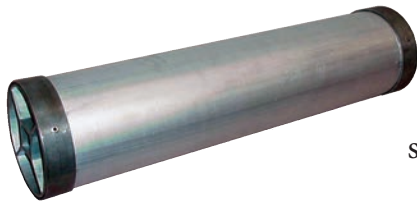
CALENDER SHELLS / SERVICE CORES

STEEL SHELLS

Everhard's calender shells are available in multiple diameters and lengths. When used in the delivery of rubber material, steel shells can handle heavier loads and higher torque than aluminum or plastic shells. To handle the required load conditions, we manufacture our steel shells using heavy duty construction with hardened steel cast hubs and numerous internal support options. In addition, different surfaces are available on steel calender shells to provide customers with options for their application.



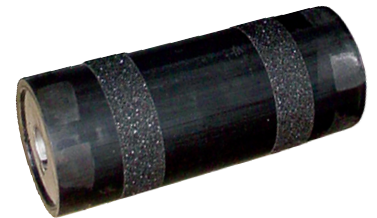
ALUMINUM SHELLS



Everhard's aluminum shells can be ideal in situations where weight and portability are factors because of their lighter weight relative to steel, wood, or plastic shells. Aluminum shells are extruded in single-piece form for added durability. The example at left is shown with optional wear rings on the ends.

PLASTIC SERVICE SHELLS

Plastic shells are made from high-density, resilient plastic components with a steel drive tube. Like aluminum shells, plastic shells are easier to load and unload from equipment, and are more suitable for lighter duty applications. The example at right is shown with optional grip tape.



EXPERIENCE WITH MATERIAL HANDLING APPLICATIONS

For more than 100 years, tire and rubber plants have relied on Everhard to produce calender shells and service cores to meet their demanding requirements. Our calender shells and service cores have become standards in the industry, and we continue to manufacture them at our Ohio plant. We cover most of the major tire and rubber-working plants' needs. We manufacture each order to ensure that the final product is tailored to the plant's specific need. Our experienced sales and engineering teams will work with your engineers and plant managers to help them determine the best type of calender shell to handle, store, transport, and unwind rubber material within the facility. We know the rubber industry and have created calender shell material handling solutions for plants such as yours, focusing on quality, safety, and simplicity. Steel, aluminum, and plastic shells also produce no contaminants inside tire and rubber plants, making them excellent replacements for wood shells. Because of our manufacturing capabilities, we can produce shells in almost any size, configuration, and load tolerance.

FACILITIES

MAIN OFFICE AND MANUFACTURING PLANT



LINE PROJECTOR ASSEMBLY/TESTING FACILITY



Detailed, product-specific brochures
are available on request.



EVERHARD PRODUCTS, INC.

1016 Ninth Street SW ■ Canton, Ohio 44707 USA

Toll-free: 1-800-298-2832 or 330-453-7786

Toll-free Fax: 1-800-225-0984 or 330-453-7449

Tire.Everhard.com