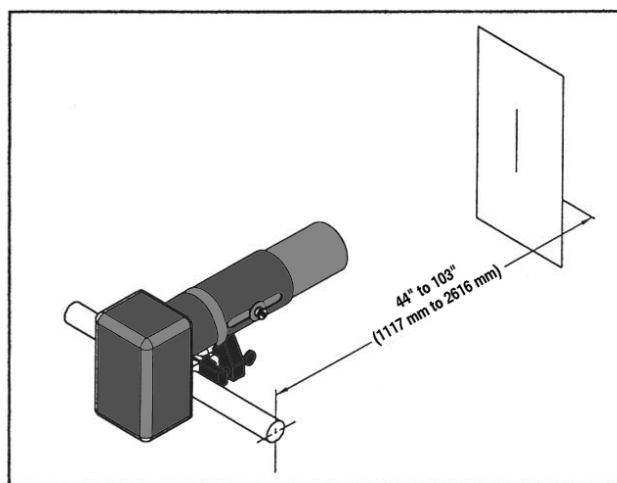
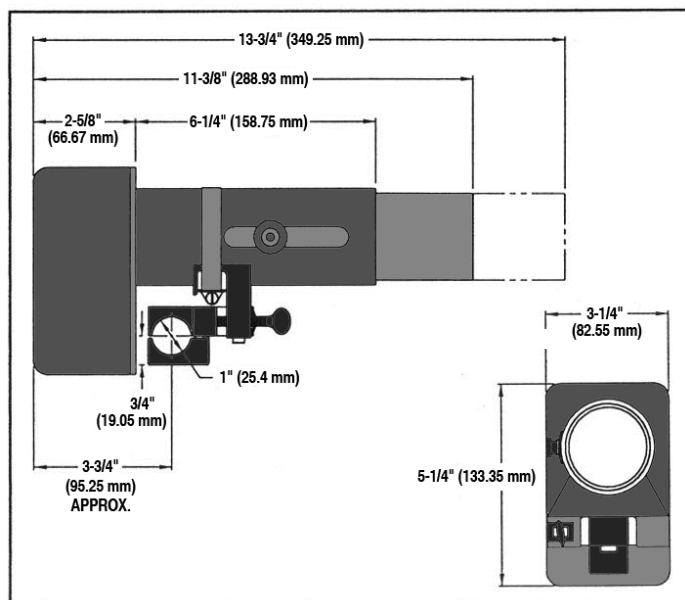


ML09010 INCANDESCENT LINE PROJECTOR

Everhard ML09010 Incandescent Line Projector-Standard Focus INSTALLATION INSTRUCTIONS



This Everhard Line Projector is designed to project a thin line of light on a still or moving surface from 44 inches to 103 inches from the mounting point.

SPECIFICATIONS

Part Number	ML09010
Operating Voltage	7.5 Volts, AC or DC
Operating Current	2.7 Amps
Focusing Range	44" to 103" (1117 mm to 2616 mm)
Weight	3 lbs. (1.36 kg)

MOUNTING

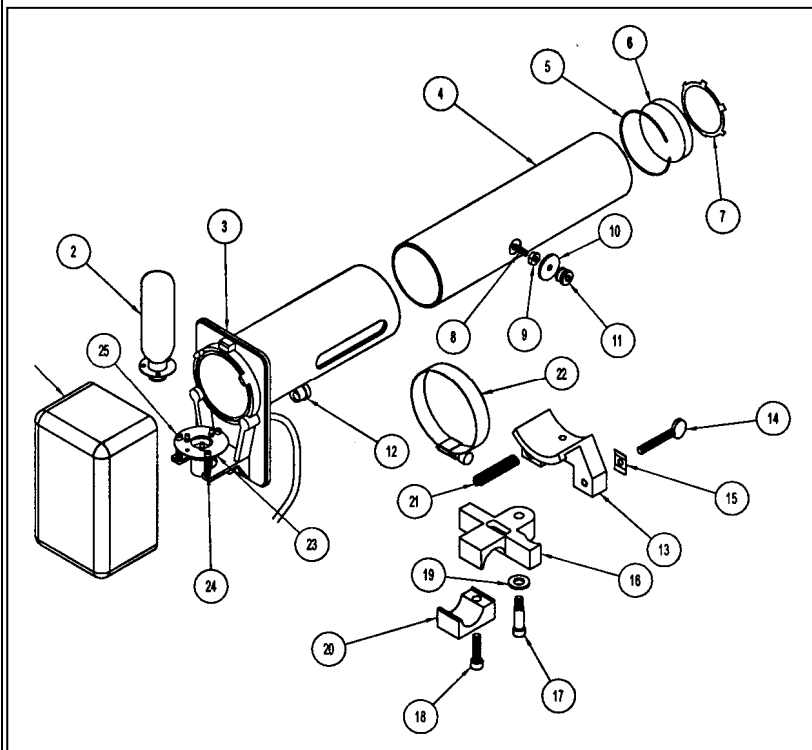
This projector is designed to mount on a 1-inch diameter bar. Although the mounting assembly on the projector is adjustable in all planes, it is best if the mounting bar is parallel to the projection surface.

The mounting bar should be as rigid and as free from vibration as practical.

Item	Description	Number Required	Everhard Part No.	(KayZee Part No.)
1	Lamp Cover	1	ML09050	(B43100)
2	Lamp*	1	ML09020	(A346)
3	Base Assembly	1	ML09110	(B43111)
4	Focusing Tube	1	ML09120	(B42897)
5	Lens Retaining Ring	1	ML09130	(A43099)
6	Lens	1	ML09040	(A49177)
7	Lens Retaining Ring	1	ML09150	(A60529)
8	Screw, Socket Head #10-24 UNC x 5/8 1 g.	1	ML09160	
9	Locknut #10-24 UNC	1	ML09170	
10	Clamp Washer	1	ML09180	(A43097)
11	Nut, Knurled, #10-24 UNC	1	ML09190	
12	Bushing	1	ML09200	(A51406-061)
13	Swivel Mount	1	ML09210	(B43124)
14	Thumb Screw	1	ML09220	(A44327)
15	Springlock	1	ML09230	
16	Clamp, Swivel	1	ML09240	(B43122)
17	Shoulder Screw	1	ML09250	(A50630-003)
18	Screw, Socket Hd. 1/4 - 20 UNC x 1" 1 g.	1	ML09260	(A50404-079)
19	Conical Washer	1		
20	Clamp	1	ML09270	(B43123)
21	Spring	1	ML09280	(A43121)
22	Clamp	1	ML09290	(A52001-009)
23	Socket and Cord**	1	ML09031	(A51826-002)
24	Spring	3	ML09360	(A43098)
25	Screw, Rd. Hd #5-04 x 1" 1 g.	3	ML09370	(A50143-587)

* Serves as a replacement for Fairway #68.

** Serves as a replacement for Fairway #7500.



ASSEMBLY

1. Remove the lamp cover and install an Everhard ML09020 lamp.
2. Connect the projector to the power source. CAUTION: USE ON 7.5 VOLTS.
3. Adjust the three screws on the lamp socket until the filament is centered on the lens.

ADJUSTMENT

1. To focus the projected line, loosen the knurled nut on the side of the barrel. Slide the barrel in or out until the line is sharp and retighten the knurled nut.
2. Skewed lines are corrected by loosening the large clamp (22) and rotating the projector in the mounting bracket.
3. Major side-to-side adjustment is made by repositioning the mounting bracket on the mounting bar. Fine side-to-side movement is made by turning the thumbscrew (14) on the mounting bracket.
4. Forward and backward movement of the line is accomplished by swinging the projector on its axis about the mounting bar.

Online at www.everhard.com